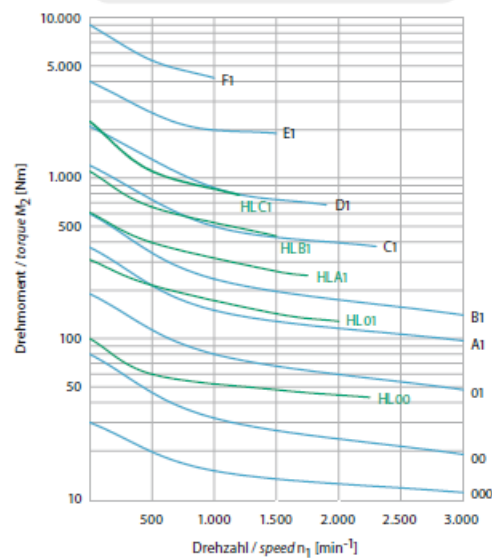
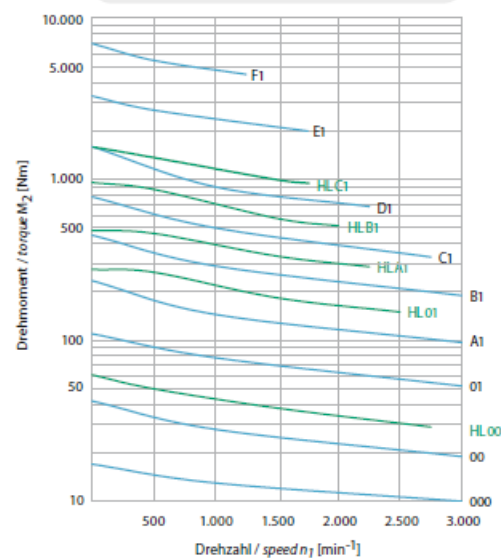


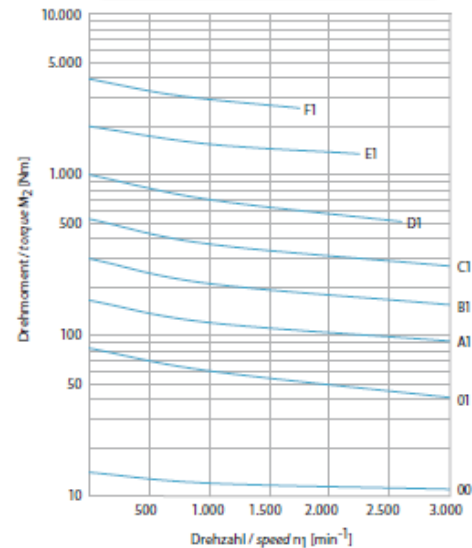
$i=n_1:n_2=1:1$  (Standard und/and HL)



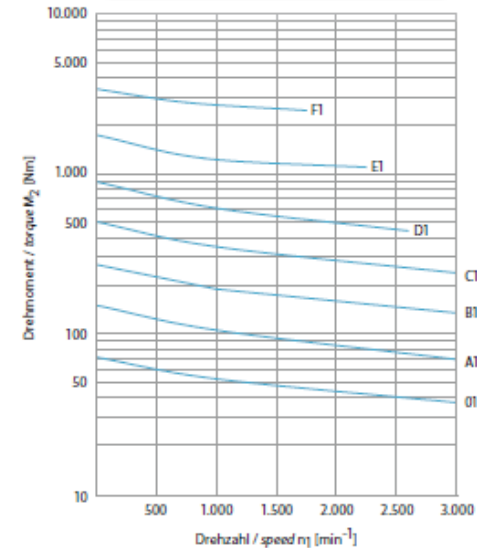
$i=n_1:n_2=2:1$  (Standard und/and HL)



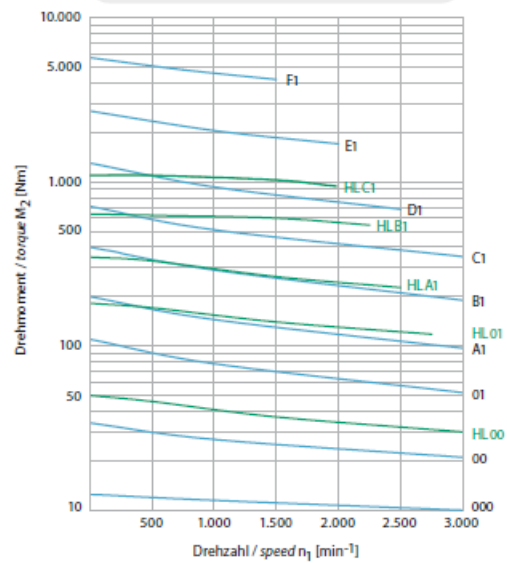
$i=n_1:n_2=5:1$  (Standard)



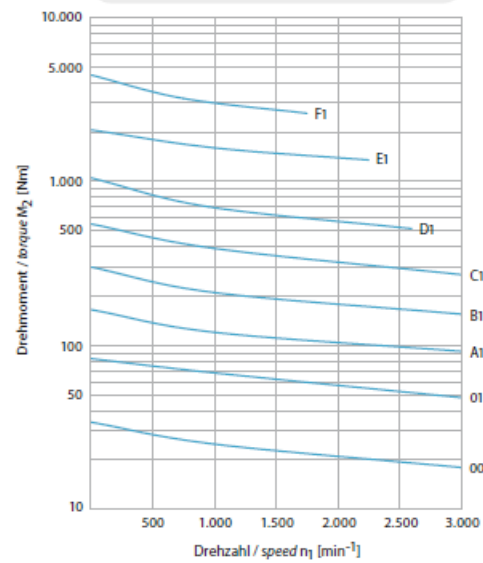
$i=n_1:n_2=6:1$  (Standard)



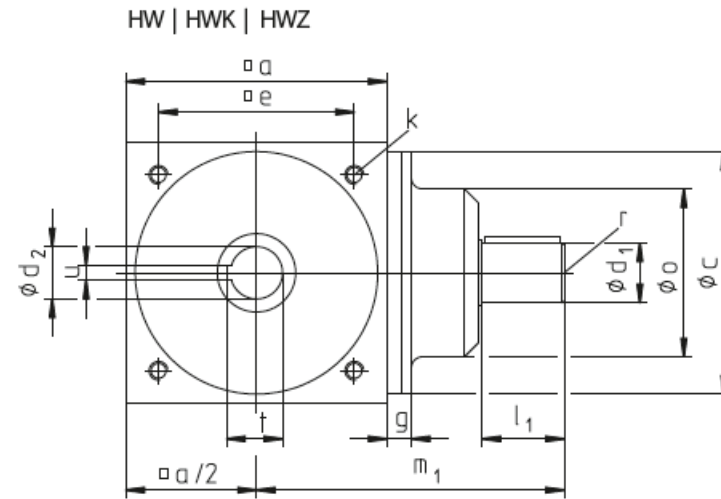
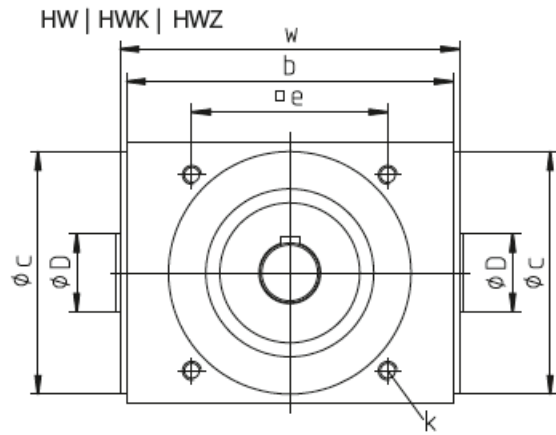
$i=n_1:n_2=3:1$  (Standard und/and HL)



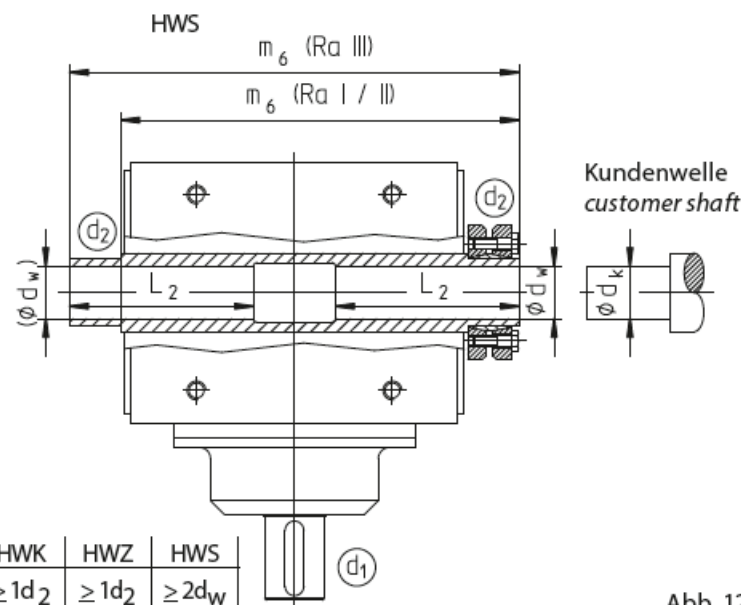
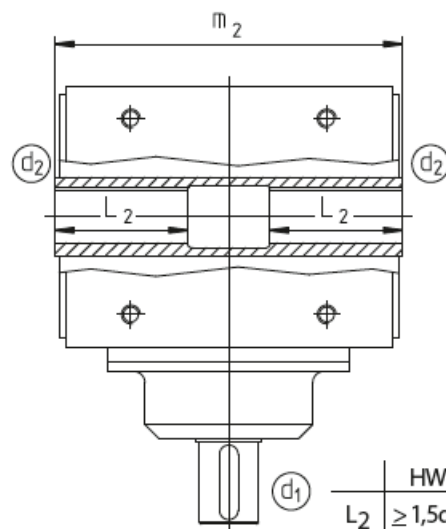
$i=n_1:n_2=4:1$  (Standard)



# VERSION à arbres creux traversant



HW | HWK | HWZ



	HW	HWK	HWZ	HWS
$L_2$	$\geq 1,5d_2$	$\geq 1d_2$	$\geq 1d_2$	$\geq 2d_w$

Abb. 12.3

dimensions communes									dimensions arbre d2										
Type	a	b	cj7	e	k Prof = 1,5 x k	w	D	m2	HW			HWK		HWZ		HWS			
									d2h 7	t	uj9	DIN		DIN 5480	DIN 5482	m6 I,II	m6 III	dwH 6	dk
HW 000	60	73	59	46	M5	84	20	86	12	13,8	4					101,5	117	12	12h6
HW 00	80	110	74	60	M6	115	22	117	14	15,2	5					133,5	150	14	14h6
HW 01	110	145	102	82	M8	150	38	152	22	23,6	6	5463	21x25x5	25x1,5	A25x22	178,0	204	24	24h6
HW A1	140	175	130	105	M10	182	42	184	28	30,0	8	5462	28x32x7	30x1,75	A30x27	212,5	241	28	28h6
HW B1	170	215	160	130	M12	222	55	224	35	37,4	10	5472	36x42x8	40 x 2	A40x36	254,5	285	35	35h6
HW C1	210	260	195	160	M16	268	65	270	45	47,1	14	5472	42x48x10	50 x 2	A50x45	305,0	340	45	45h6
HW D1	260	330	245	200	M16	338	80	340	55	57,4	16	5463	46x54x9	60 x 2	A60x55	380,0	420	55	55g6
HW E1	330	430	310	260	M20	438	100	440	60	64,4	18	5472	58x65x14	65 x 2	A65x60	486,0	532	65	65g6
HW F1	400	530	380	320	M24	538	120	540	70	72,7	20	5472	68x78x16	75 x 2	A75x69	591,0	642	70	70g6

dimensions arbre d1 1/1 1,25/1 1,5/1 1,75/1 2/1 2,5/1							
Type	g	l1	m1	o	d1j6	r	clavette DIN 6885/1
HW 000	11	23	89	42	12	M5	4 x 4
HW 00	13	30	110	52	14	M6	5 x 5
HW 01	14	35	135	70	22	M8	6 x 6
HW A1	14	45	165	90	32	M10	10 x 8
HW B1	18	60	210	110	42	M12	12 x 8
HW C1	18	85	275	135	55	M16	16 x 10
HW D1	23	100	340	150	65	M16	18 x 11
HW E1	29	120	435	230	75	M20	20 x 12
HW F1	40	150	550	270	90	M24	25 x 14

dimensions arbre d1 3/1							
Type	g	l1	m1	o	d1j6	r	clavette DIN 6885/1
HW 000	11	19	83	42	9	M4	3 x 3
HW 00	13	25	105	52	12	M5	4 x 4
HW 01	14	35	135	70	22	M8	6 x 6
HW A1	14	45	165	90	32	M10	10 x 8
HW B1	18	55	205	100	36	M10	10 x 8
HW C1	18	65	255	135	38	M10	10 x 8
HW D1	32	85	325	135	55	M16	16 x 10
HW E1	29	85	400	190	55	M16	16 x 10
HW F1	40	120	520	270	75	M20	20 x 12

dimensions arbre d1 3,5/1							
Type	g	l1	m1	o	d1j6	r	clavette DIN 6885/1
HW 00	13	25	105	52	12	M5	4 x 4
HW 01	14	30	130	70	16	M6	5 x 5
HW A1	14	32	152	80	20	M8	6 x 6
HW B1	23	45	200	80	26	M8	8 x 7
HW C1	18	45	235	105	32	M10	10 x 8
HW D1	28	70	310	110	42	M12	12 x 8
HW E1	29	75	390	190	50	M16	14 x 9
HW F1	40	95	495	200	60	M16	18 x 11

dimensions arbre d1 4/1							
Type	g	l1	m1	o	d1j6	r	clavette DIN 6885/1
HW 00	13	20	100	47	9	M4	3 x 3
HW 01	14	30	130	70	16	M6	5 x 5
HW A1	14	32	152	80	20	M8	6 x 6
HW B1	23	45	200	80	26	M8	8 x 7
HW C1	18	45	235	105	32	M10	10 x 8
HW D1	28	70	310	110	42	M12	12 x 8
HW E1	29	75	390	190	50	M16	14 x 9
HW F1	40	95	495	200	60	M16	18 x 11

dimensions arbre d1 5/1							
Type	g	l1	m1	o	d1j6	r	clavette DIN 6885/1
HW 00	13	20	100	47	9	M4	3 x 3
HW 01	14	22	122	55	12	M5	4 x 4
HW A1	14	30	150	65	16	M6	5 x 5
HW B1	24	40	195	70	22	M8	6 x 6
HW C1	18	45	235	95	26	M8	8 x 7
HW D1	23	58	298	105	32	M10	10 x 8
HW E1	29	70	385	190	42	M12	12 x 8
HW F1	40	85	485	200	55	M16	16 x 10

dimensions arbre d1 6/1							
Type	g	l1	m1	o	d1j6	r	clavette DIN 6885/1
HW 00							
HW 01	14	22	122	50	10	M4	3 x 3
HW A1	14	30	150	55	12	M5	4 x 4
HW B1	24	30	185	70	16	M6	5 x 5
HW C1	18	45	235	95	20	M8	6 x 6
HW D1	23	45	235	105	26	M8	8 x 7
HW E1	29	70	385	190	40	M12	12 x 8
HW F1	40	85	485	200	55	M16	16 x 10